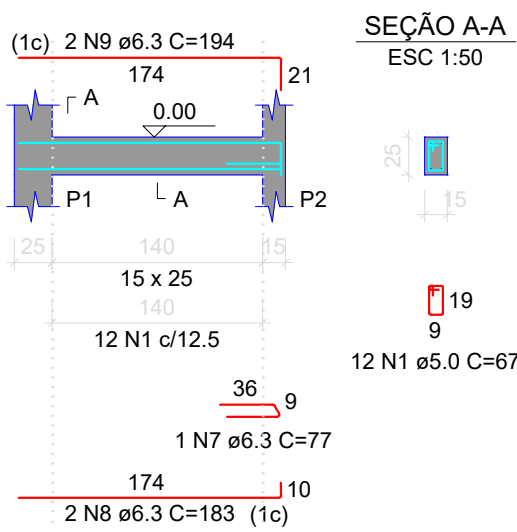
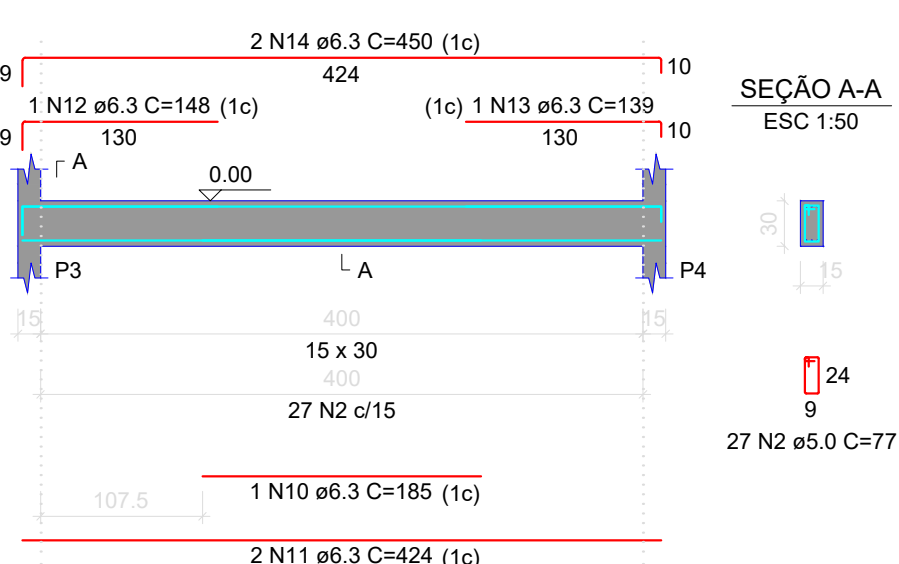


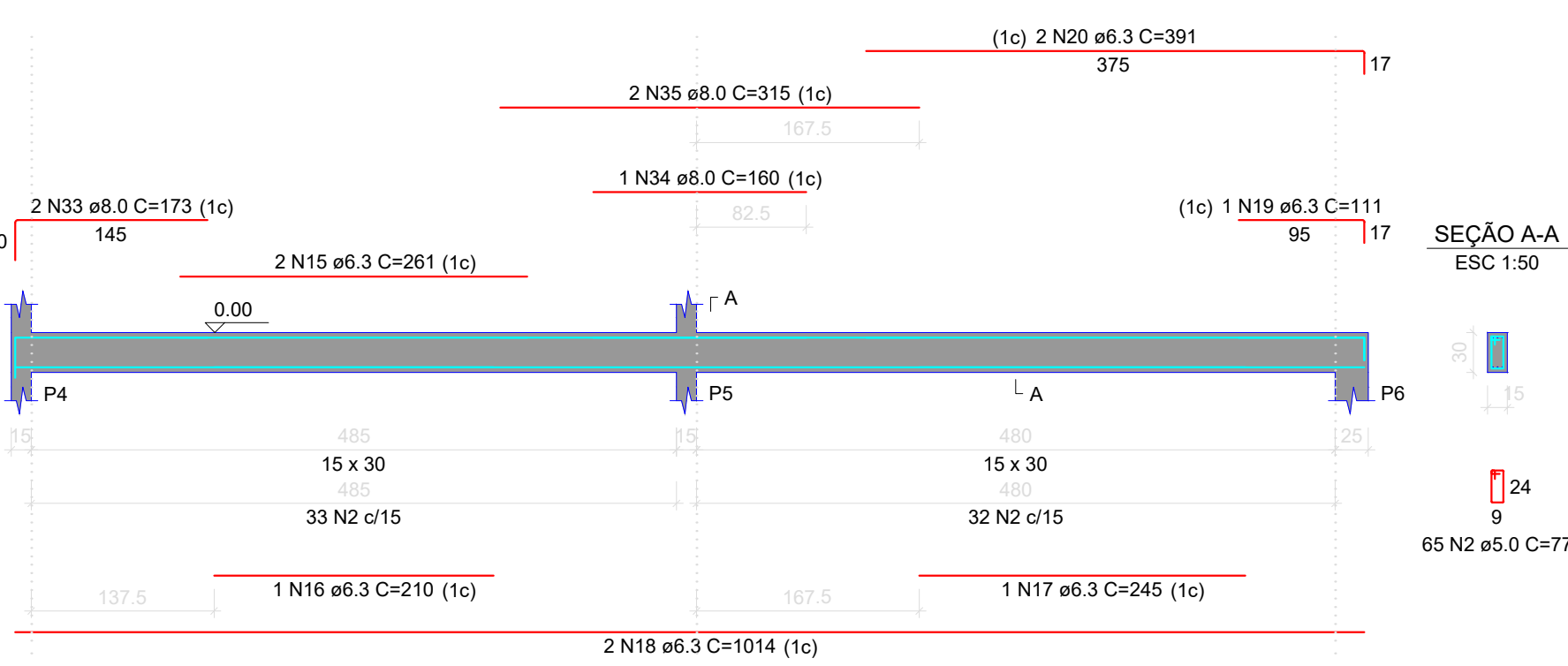
V1 (15 x 25)



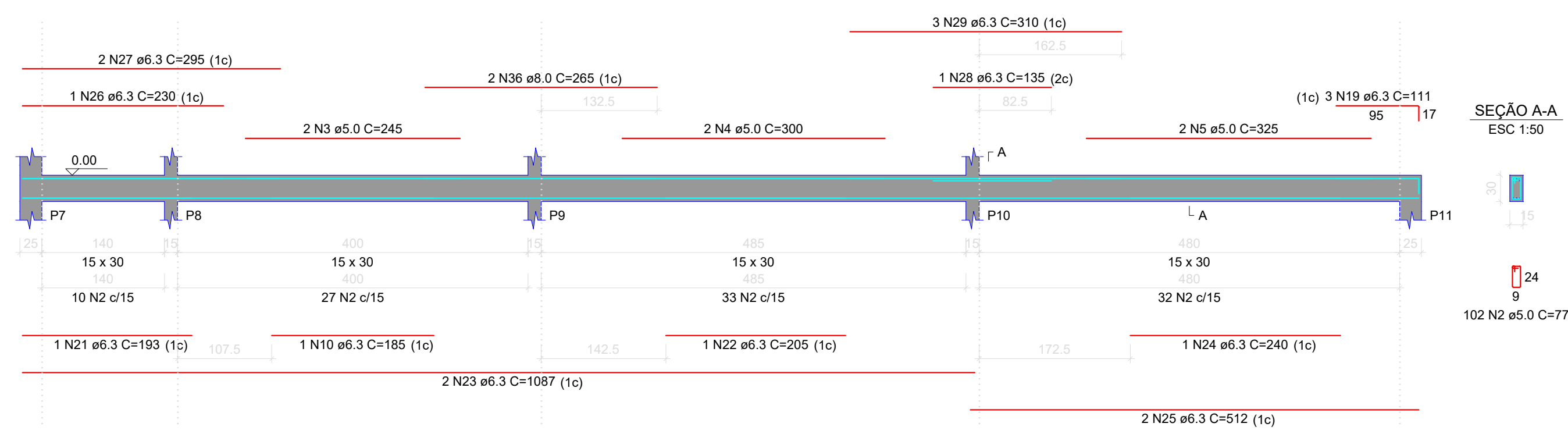
V2 (15 x 30)



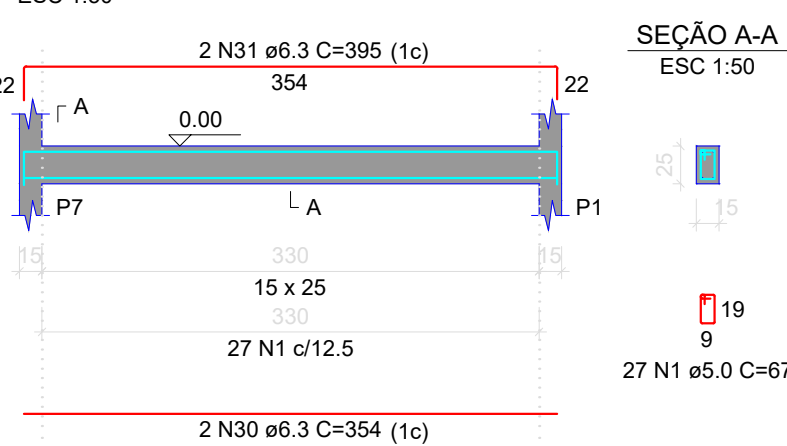
V3 (15 x 30)



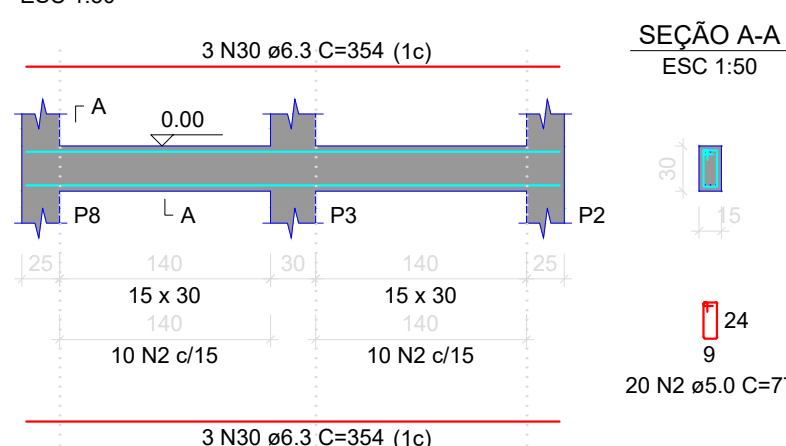
V4 (15 x 30)



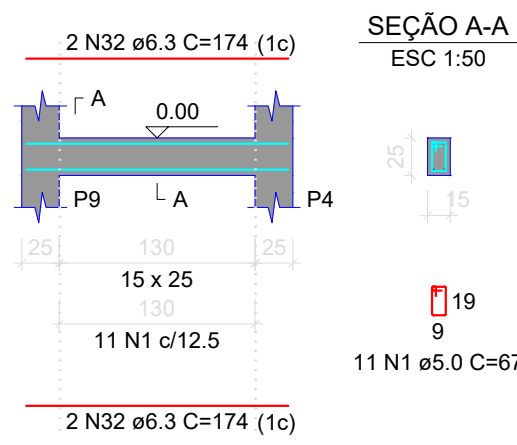
V5 (15 x 25)



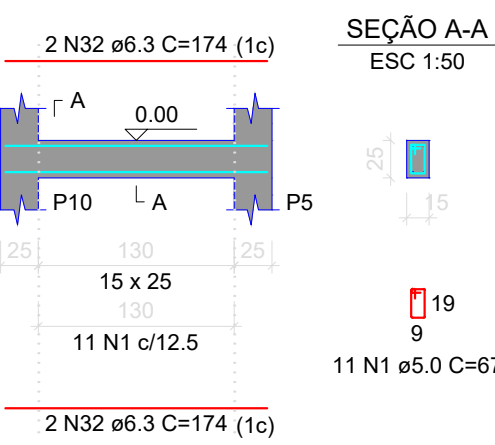
V6 (15 x 30)



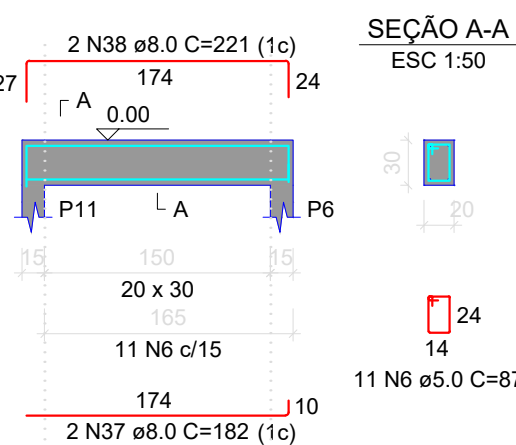
V7 (15 x 25)



V8 (15 x 25)



V9 (20 x 30)



RELAÇÃO DO AÇO

AÇO	N	DIAM (mm)	QUANT	C.UNIT (cm)	C.TOTAL (cm)
CA60	1	5.0	61	67	4087
	2	5.0	214	77	16478
	3	5.0	2	245	490
	4	5.0	2	300	600
	5	5.0	2	325	650
CA50	6	5.0	11	87	957
	7	6.3	2	77	77
	8	6.3	2	183	366
	9	6.3	2	194	388
	10	6.3	2	185	370
	11	6.3	2	424	848
	12	6.3	1	148	148
	13	6.3	1	139	139
	14	6.3	2	450	900
	15	6.3	2	261	522
	16	6.3	1	210	210
	17	6.3	1	245	245
	18	6.3	2	1014	2028
	19	6.3	4	111	444
	20	6.3	2	391	782
	21	6.3	1	193	193
	22	6.3	1	205	205
	23	6.3	2	1087	2174
	24	6.3	1	240	240
	25	6.3	2	512	1024
	26	6.3	1	230	230
	27	6.3	2	295	590
	28	6.3	1	135	135
	29	6.3	3	310	930
	30	6.3	8	354	2832
	31	6.3	2	395	790
	32	6.3	8	174	1392
	33	8.0	2	173	346
	34	8.0	1	160	160
	35	8.0	2	315	630
	36	8.0	2	265	530
	37	8.0	2	182	364
	38	8.0	2	221	442

RESUMO DO AÇO

AÇO	DIAM (mm)	C.TOTAL (m)	PESO + 10% (kg)
CA50	6.3	182	49
CA60	8.0	24.7	10.7
CA60	5.0	232.6	39.4
PESO TOTAL (kg)			
CA50	59.7		
CA60	39.4		

Volume de concreto (C-25) = 1.98 m³
Área de forma = 32.87 m²

ESTADO DE MATO GROSSO PREFEITURA MUNICIPAL DE BARRA DO GARÇAS-MT <small>CNPJ 03.439.239/0001-50 RUA CARAJÁS, 522 CENTRO - BARRA DO GARÇAS/MT - CEP:78.600-907</small>		SECRETARIA MUNICIPAL DE PLANEJAMENTO URBANO E OBRAS		Folha : 02/14
		COORDENADAS: 15°53'18.25" S 52°15'27.34" W		
Obra : PROJETO ESTRUTURAL DOM BOSCO - RAMPA		APROVAÇÃO		
Conteúdo : PROJETO ESTRUTURAL - DETALHAMENTO DE VIGAS BALDRAMES DO TRECHO 1				
Local : RUA PRIMEIRO DE MAIO, N° 598, CEP: 78.600-008, Barra do Garças - MT				
Propriedade : Prefeitura Municipal Barra do Garças				
Proprietário:		Autor do projeto:		
 Prefeitura Municipal De Barra Do Garças		 Responsável Técnico		
Área Construída:	Dimensões:	Escala : INDICADA		
Arquivo : CAD	Data : SETEMBRO/2021	Projetista :		